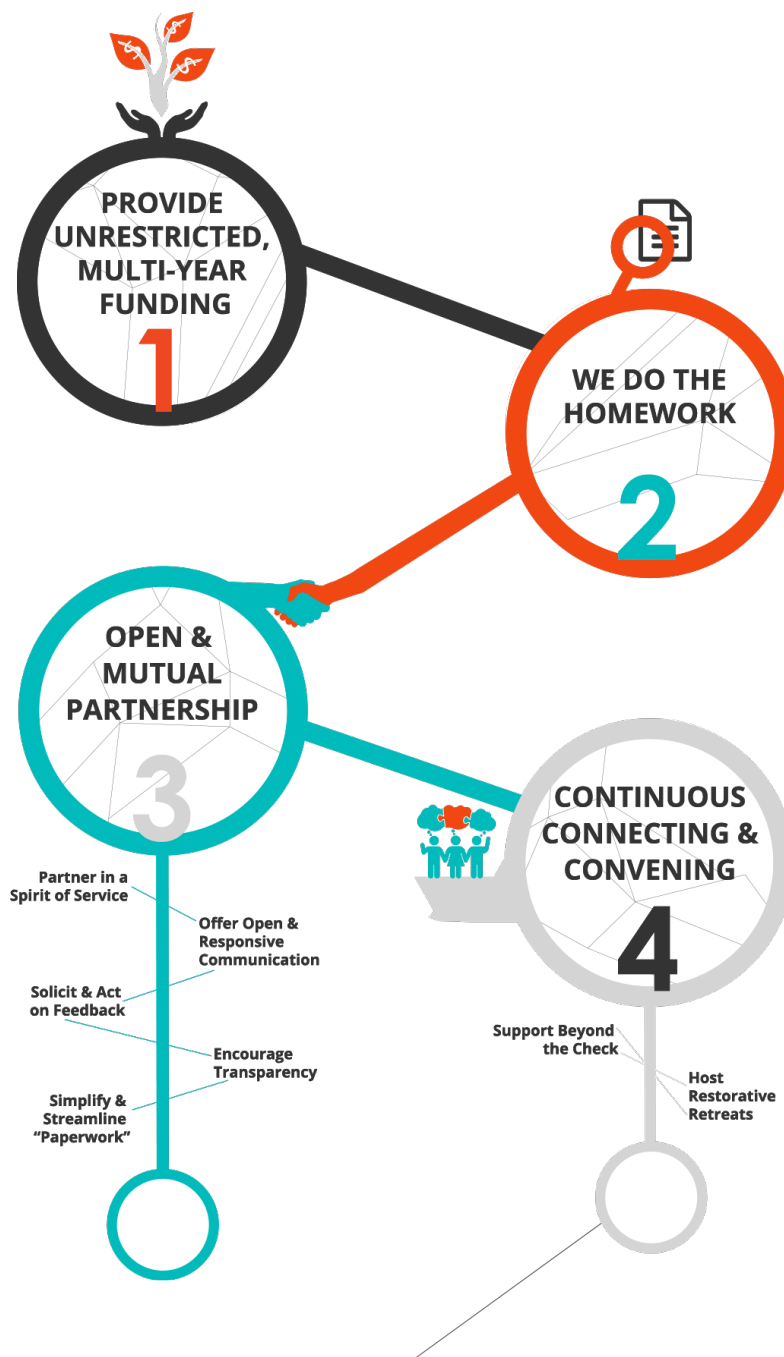


## TRUST-BASED PHILANTHROPY

The Whitman Institute’s approach to trust-based philanthropy is informed by a decade of experience that funder-grantee relationships are stronger when they are built on the foundation of trust. The idea is simple: philanthropy can be more effective when funders approach their grantee relationships from a place of trust, rather than suspicion.

### The Principles of Trust-Based Philanthropy

We believe efforts to create social, political, and economic equity will be more successful if philanthropy embeds trust, dialogue, and relationship-building in its practices with grantees. A trust-based approach relies on the following principles:



## The Benefits of Trust-Based Philanthropy

The overarching benefit of a trust-based approach is improved relationships between funders and grantees, which results in **more honest conversations and more opportunities for thought partnership and shared problem-solving**. In addition to this, there are distinct benefits for both funders and grantees:

### For Funders

- New insights about the challenges facing nonprofits
- Less grantee paperwork, allowing for more time to evaluate the big picture and provide support “beyond the check”
- A deeper sense of connection to the philanthropic mission
- An ability to exercise power more effectively, in a way that better resonates with grantees

### For Grantees

- More time to work on advancing mission-driven outcomes
- Less stress for nonprofit executive directors and senior management, resulting in greater overall effectiveness
- More opportunities for brainstorming and outcomes-mapping with funder partners

## A Trend Toward Trust-Based Practice

More and more grantmakers are taking steps to embed trust into their approach, especially in light of the current political climate which requires fast learning and reflective action. While there are often variables that affect a funder’s capacity to fully embody trust-in-practice, many organizations are learning that they can tailor aspects of this model to strengthen their work. If you'd like to learn more about applying trust-based philanthropy in the context of your organization, we'd love to talk. Contact us at: [contact@thewhitmaninstitute.org](mailto:contact@thewhitmaninstitute.org).

### ***About the Whitman Institute***

*The Whitman Institute is a San Francisco-based foundation that advances social, political, and economic equity by funding dialogue, relationship building, and inclusive leadership. Our multi-issue portfolio reflects this belief with investments in civic and community engagement, leadership development, human rights, movement building, and media and journalism. In 2011, we announced our plans to spend out our modest assets by 2022, with the aspiration that more funders and investors will be explicitly resourcing relationships, dialogue, and equity and doing so through trust-based philanthropy. Read more at [www.thewhitmaninstitute.org](http://www.thewhitmaninstitute.org), and find us on Facebook and Twitter (@TWI\_2022).*